

PLAN SHOWING THE PROPOSED CONSTRUCTION OF A RESIDENTIAL BUILDING AT PLOT NO. 26 B & 27 C, 2nd CROSS STREET, NATESA NAGAR VIRUGAMBARAM, CHENNAI - 600 092. P.S. NO. 02, BLOCK NO. 3 OF VIRUGAMBARAM VILLAGE, DIVISION NO. 65, ZONE V.

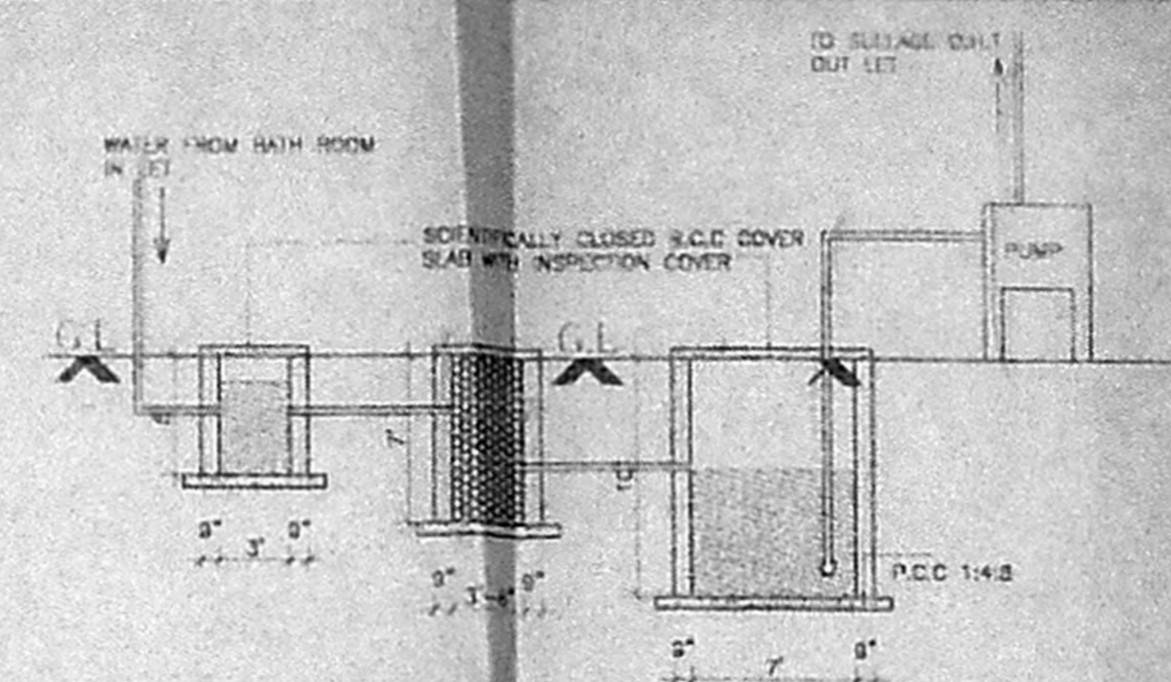
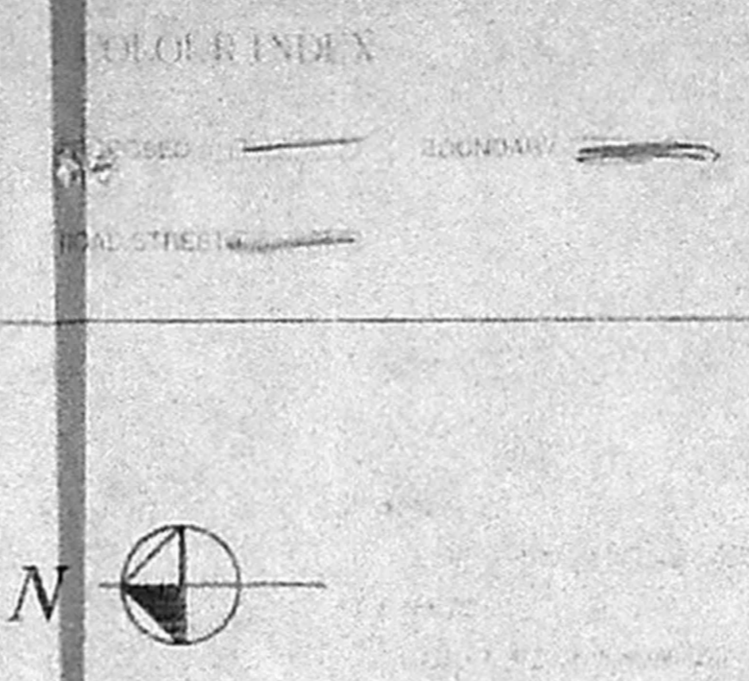
SUB-DIVISION APPROVED NO. SD/05/174/94 Date 5-9-94  
SCALE: 1/750 @ 100

JOINTERS

0	CLIP	1/2" X 1/2"
1	CLIP	1/2" X 1/2"
2	CLIP	1/2" X 1/2"
3	CLIP	1/2" X 1/2"
4	CLIP	1/2" X 1/2"
5	CLIP	1/2" X 1/2"
6	CLIP	1/2" X 1/2"
7	CLIP	1/2" X 1/2"
8	CLIP	1/2" X 1/2"
9	CLIP	1/2" X 1/2"
10	CLIP	1/2" X 1/2"
11	CLIP	1/2" X 1/2"
12	CLIP	1/2" X 1/2"
13	CLIP	1/2" X 1/2"
14	CLIP	1/2" X 1/2"
15	CLIP	1/2" X 1/2"
16	CLIP	1/2" X 1/2"
17	CLIP	1/2" X 1/2"
18	CLIP	1/2" X 1/2"
19	CLIP	1/2" X 1/2"
20	CLIP	1/2" X 1/2"
21	CLIP	1/2" X 1/2"
22	CLIP	1/2" X 1/2"
23	CLIP	1/2" X 1/2"
24	CLIP	1/2" X 1/2"
25	CLIP	1/2" X 1/2"
26	CLIP	1/2" X 1/2"
27	CLIP	1/2" X 1/2"
28	CLIP	1/2" X 1/2"
29	CLIP	1/2" X 1/2"
30	CLIP	1/2" X 1/2"
31	CLIP	1/2" X 1/2"
32	CLIP	1/2" X 1/2"
33	CLIP	1/2" X 1/2"
34	CLIP	1/2" X 1/2"
35	CLIP	1/2" X 1/2"
36	CLIP	1/2" X 1/2"
37	CLIP	1/2" X 1/2"
38	CLIP	1/2" X 1/2"
39	CLIP	1/2" X 1/2"
40	CLIP	1/2" X 1/2"
41	CLIP	1/2" X 1/2"
42	CLIP	1/2" X 1/2"
43	CLIP	1/2" X 1/2"
44	CLIP	1/2" X 1/2"
45	CLIP	1/2" X 1/2"
46	CLIP	1/2" X 1/2"
47	CLIP	1/2" X 1/2"
48	CLIP	1/2" X 1/2"
49	CLIP	1/2" X 1/2"
50	CLIP	1/2" X 1/2"
51	CLIP	1/2" X 1/2"
52	CLIP	1/2" X 1/2"
53	CLIP	1/2" X 1/2"
54	CLIP	1/2" X 1/2"
55	CLIP	1/2" X 1/2"
56	CLIP	1/2" X 1/2"
57	CLIP	1/2" X 1/2"
58	CLIP	1/2" X 1/2"
59	CLIP	1/2" X 1/2"
60	CLIP	1/2" X 1/2"
61	CLIP	1/2" X 1/2"
62	CLIP	1/2" X 1/2"
63	CLIP	1/2" X 1/2"
64	CLIP	1/2" X 1/2"
65	CLIP	1/2" X 1/2"
66	CLIP	1/2" X 1/2"
67	CLIP	1/2" X 1/2"
68	CLIP	1/2" X 1/2"
69	CLIP	1/2" X 1/2"
70	CLIP	1/2" X 1/2"
71	CLIP	1/2" X 1/2"
72	CLIP	1/2" X 1/2"
73	CLIP	1/2" X 1/2"
74	CLIP	1/2" X 1/2"
75	CLIP	1/2" X 1/2"
76	CLIP	1/2" X 1/2"
77	CLIP	1/2" X 1/2"
78	CLIP	1/2" X 1/2"
79	CLIP	1/2" X 1/2"
80	CLIP	1/2" X 1/2"
81	CLIP	1/2" X 1/2"
82	CLIP	1/2" X 1/2"
83	CLIP	1/2" X 1/2"
84	CLIP	1/2" X 1/2"
85	CLIP	1/2" X 1/2"
86	CLIP	1/2" X 1/2"
87	CLIP	1/2" X 1/2"
88	CLIP	1/2" X 1/2"
89	CLIP	1/2" X 1/2"
90	CLIP	1/2" X 1/2"
91	CLIP	1/2" X 1/2"
92	CLIP	1/2" X 1/2"
93	CLIP	1/2" X 1/2"
94	CLIP	1/2" X 1/2"
95	CLIP	1/2" X 1/2"
96	CLIP	1/2" X 1/2"
97	CLIP	1/2" X 1/2"
98	CLIP	1/2" X 1/2"
99	CLIP	1/2" X 1/2"
100	CLIP	1/2" X 1/2"

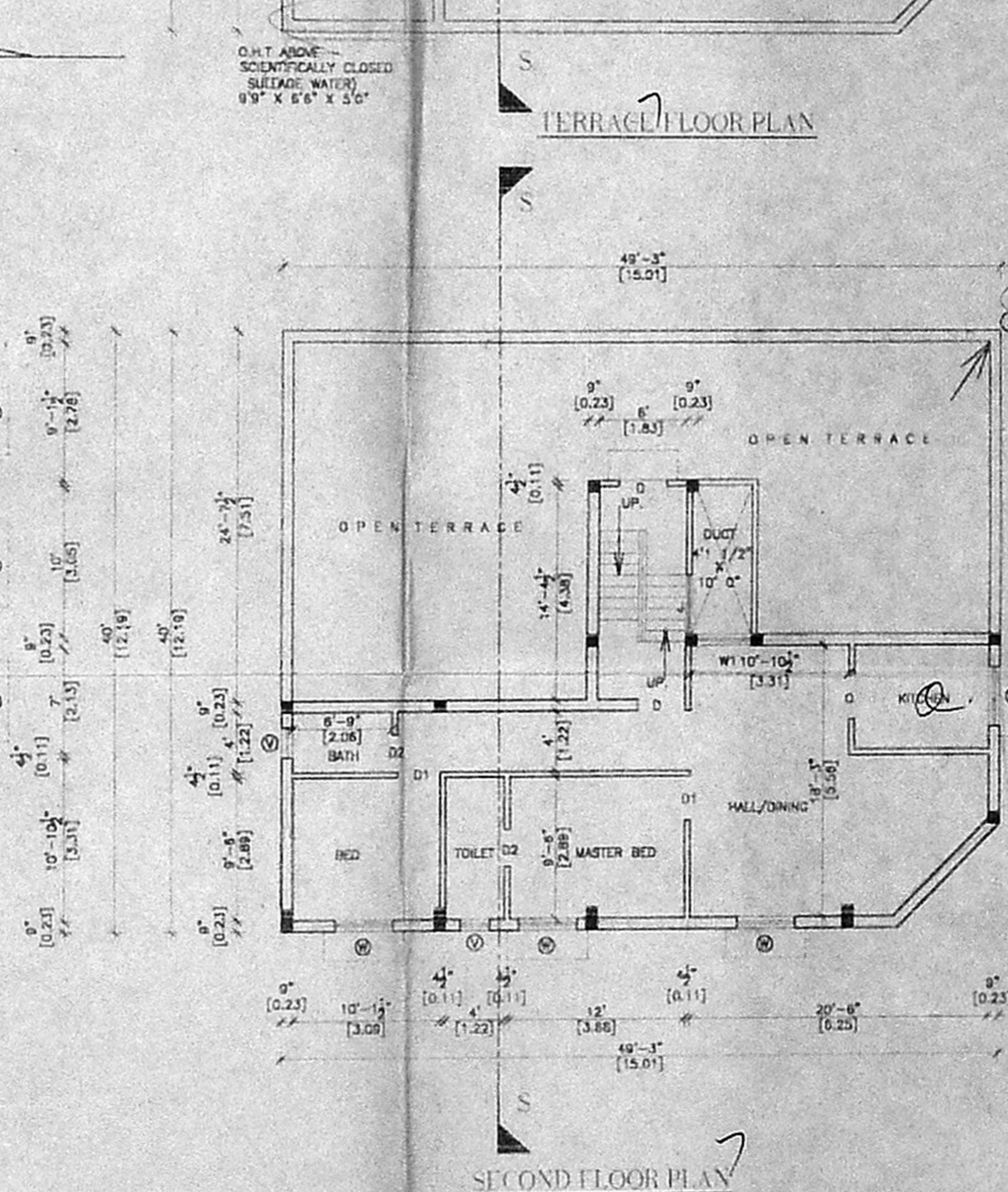
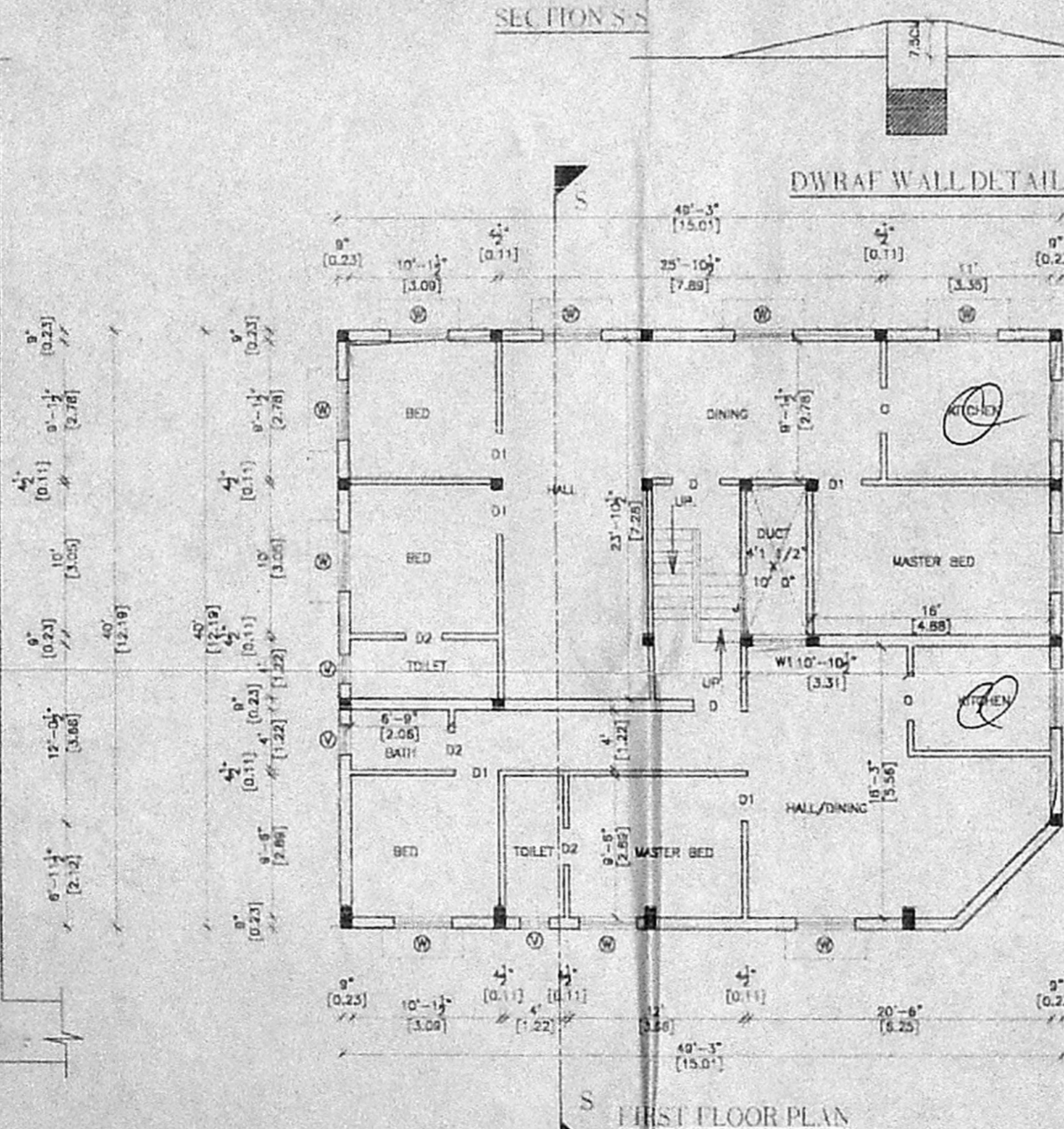
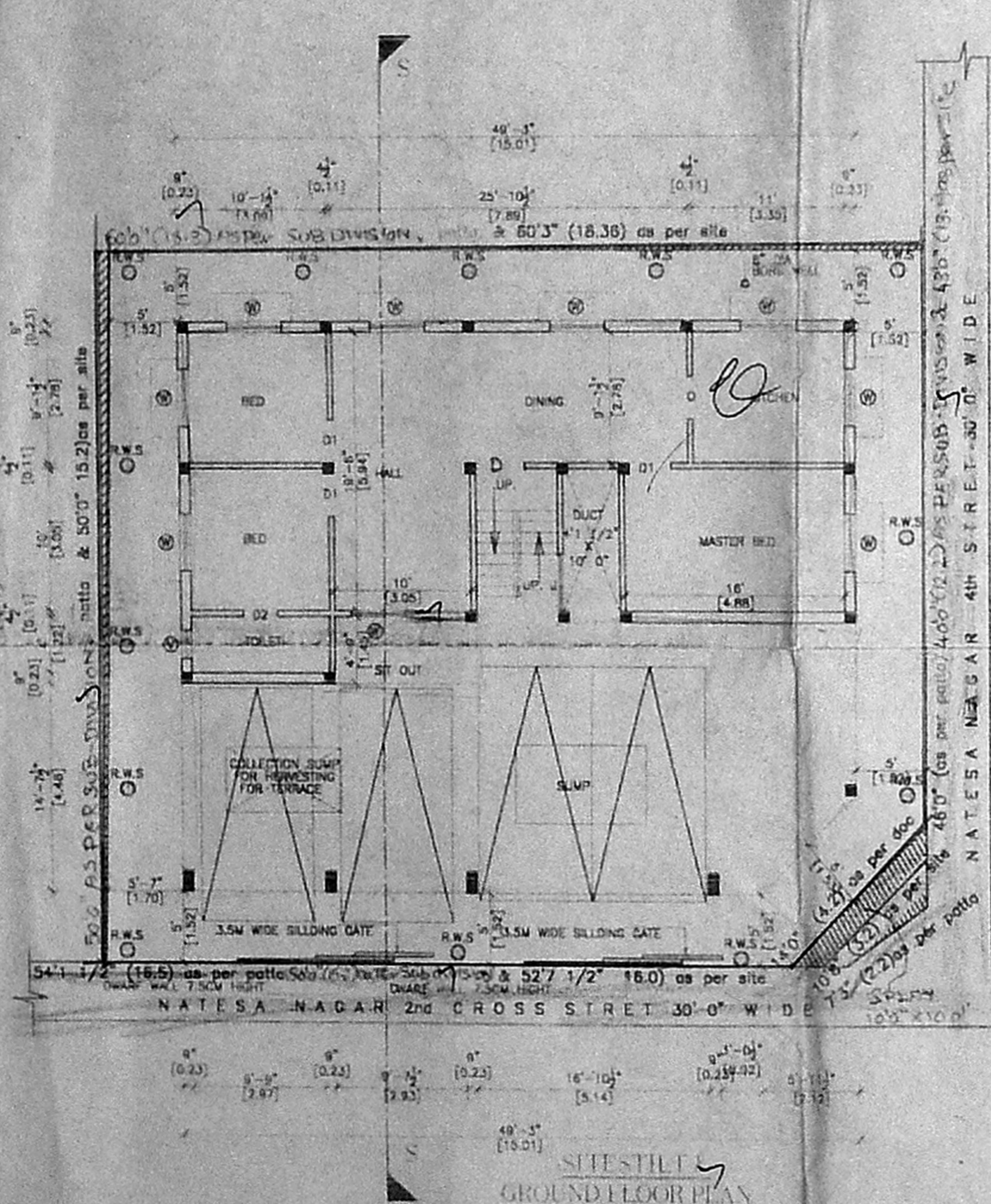
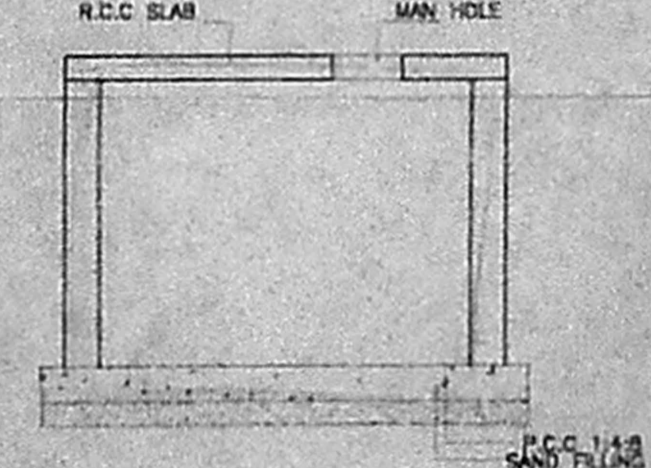
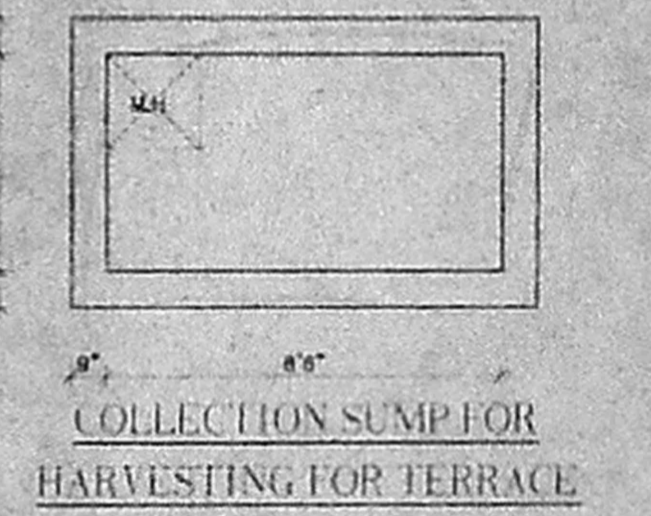
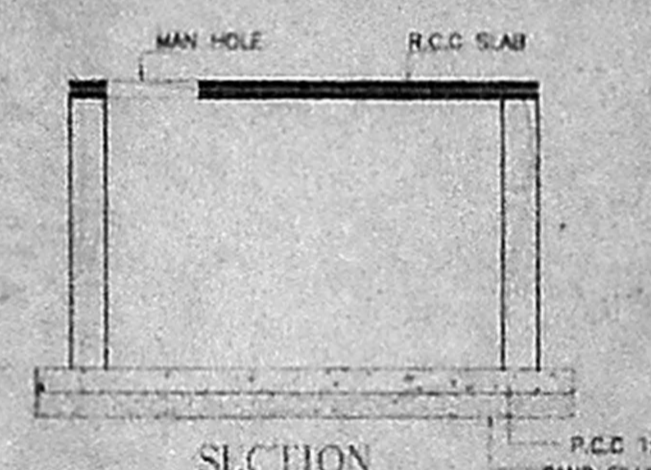
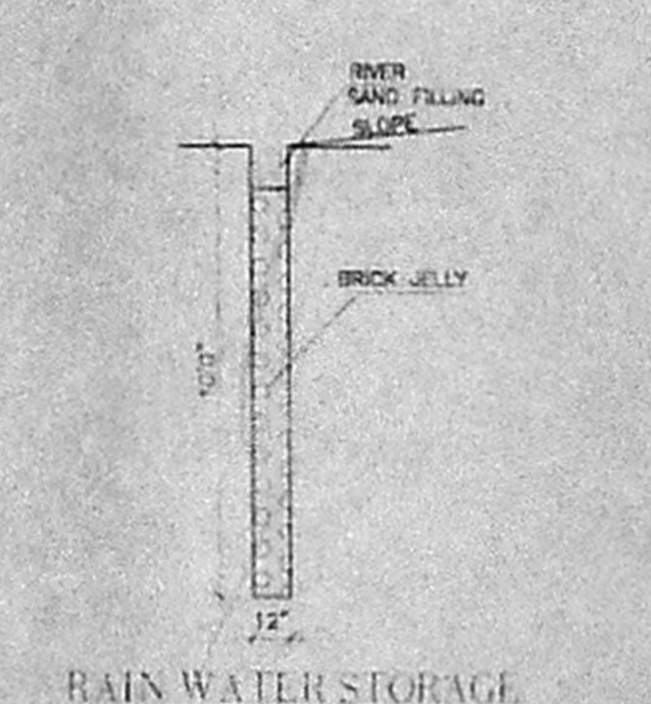
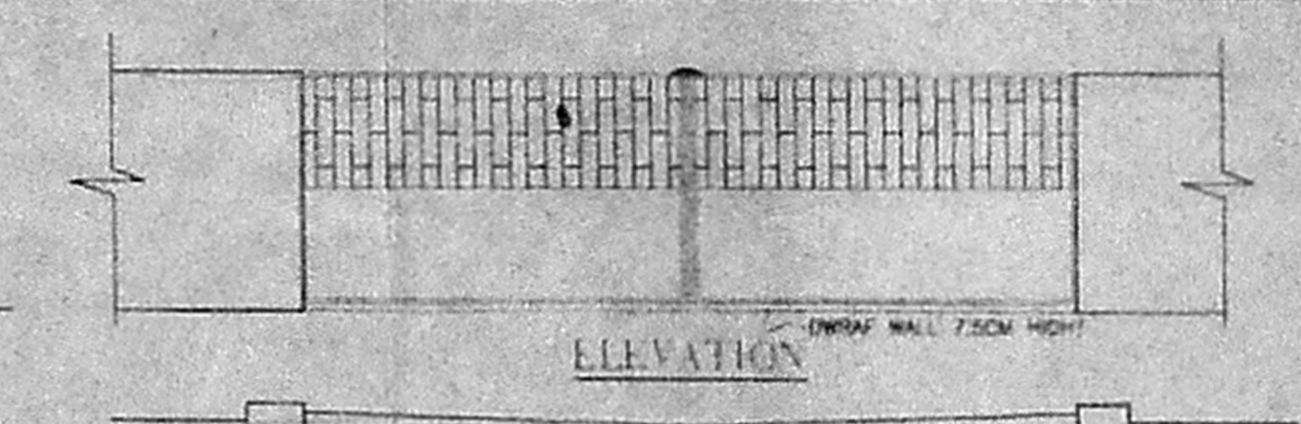
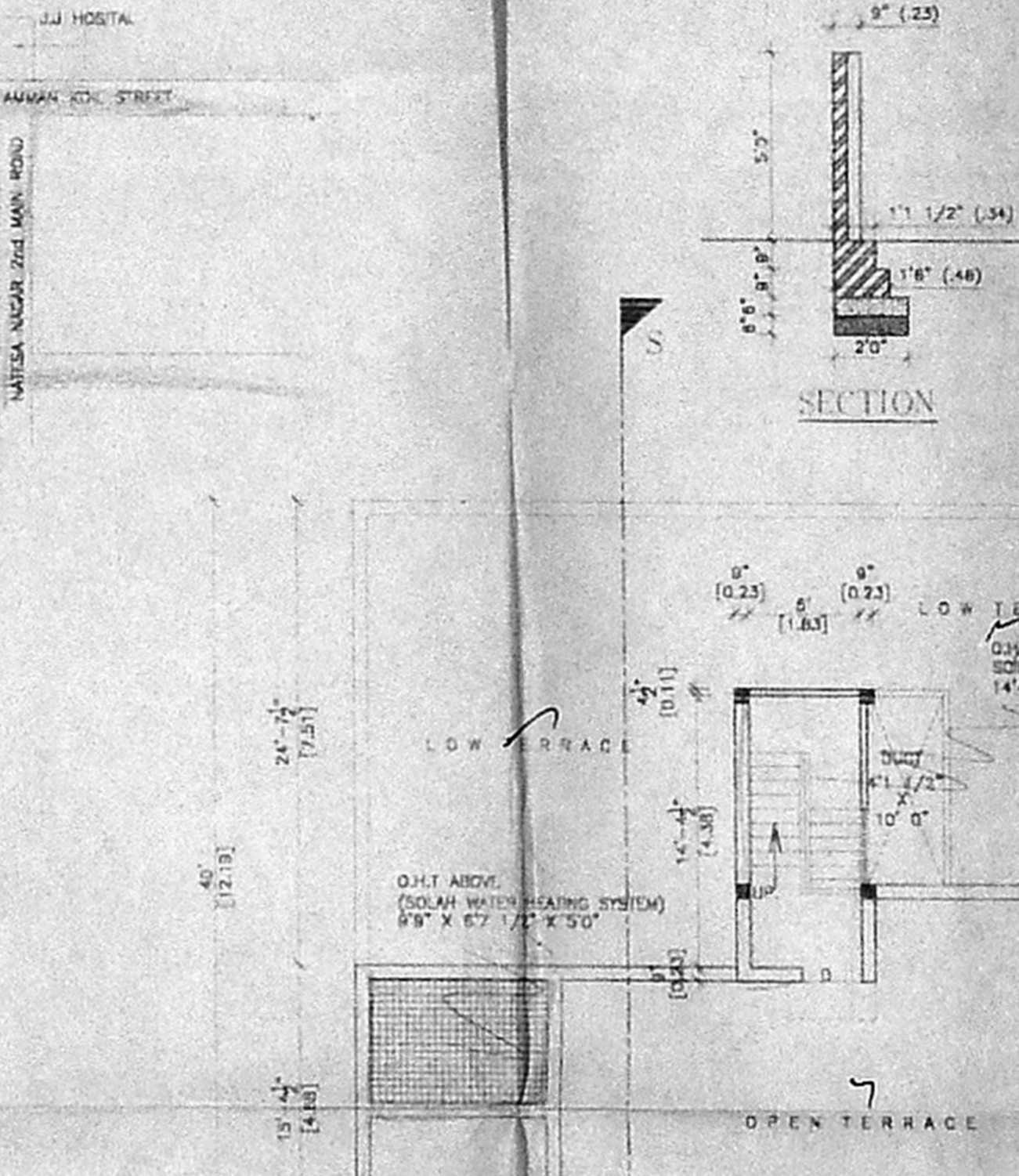
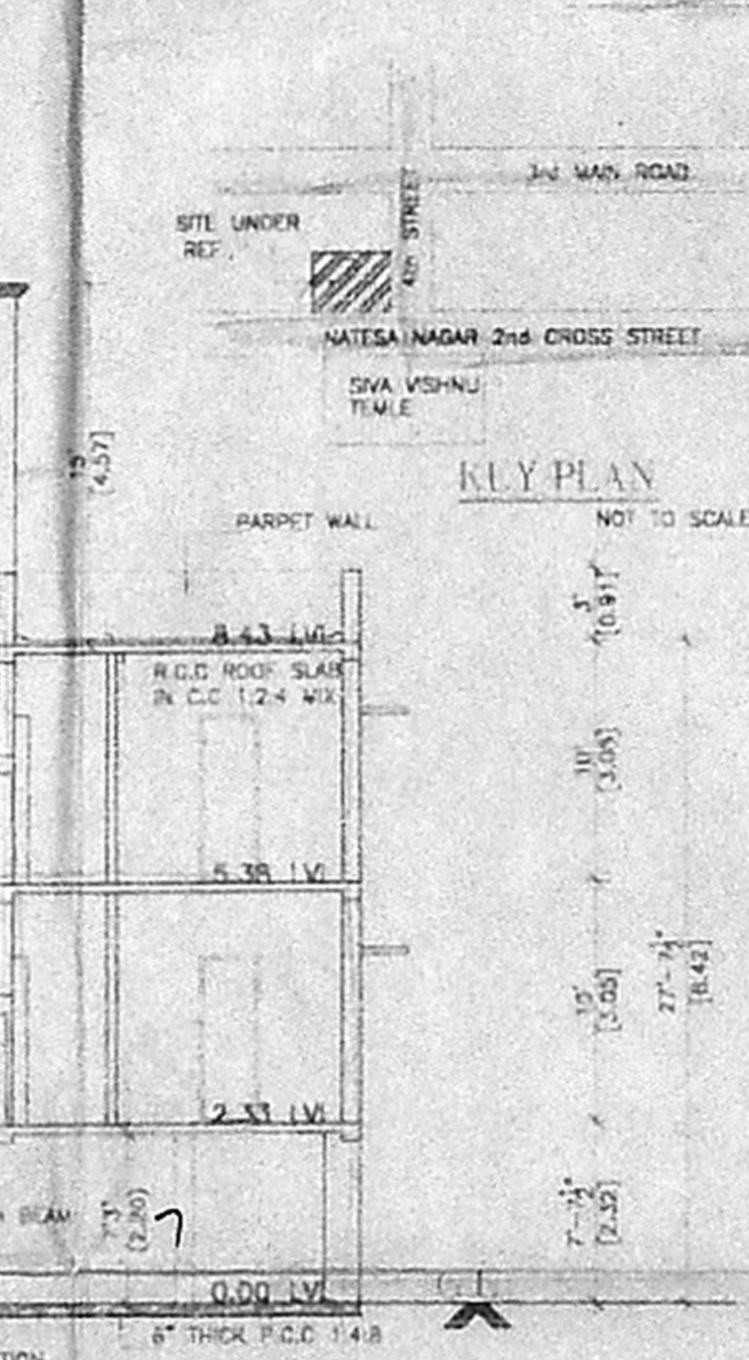
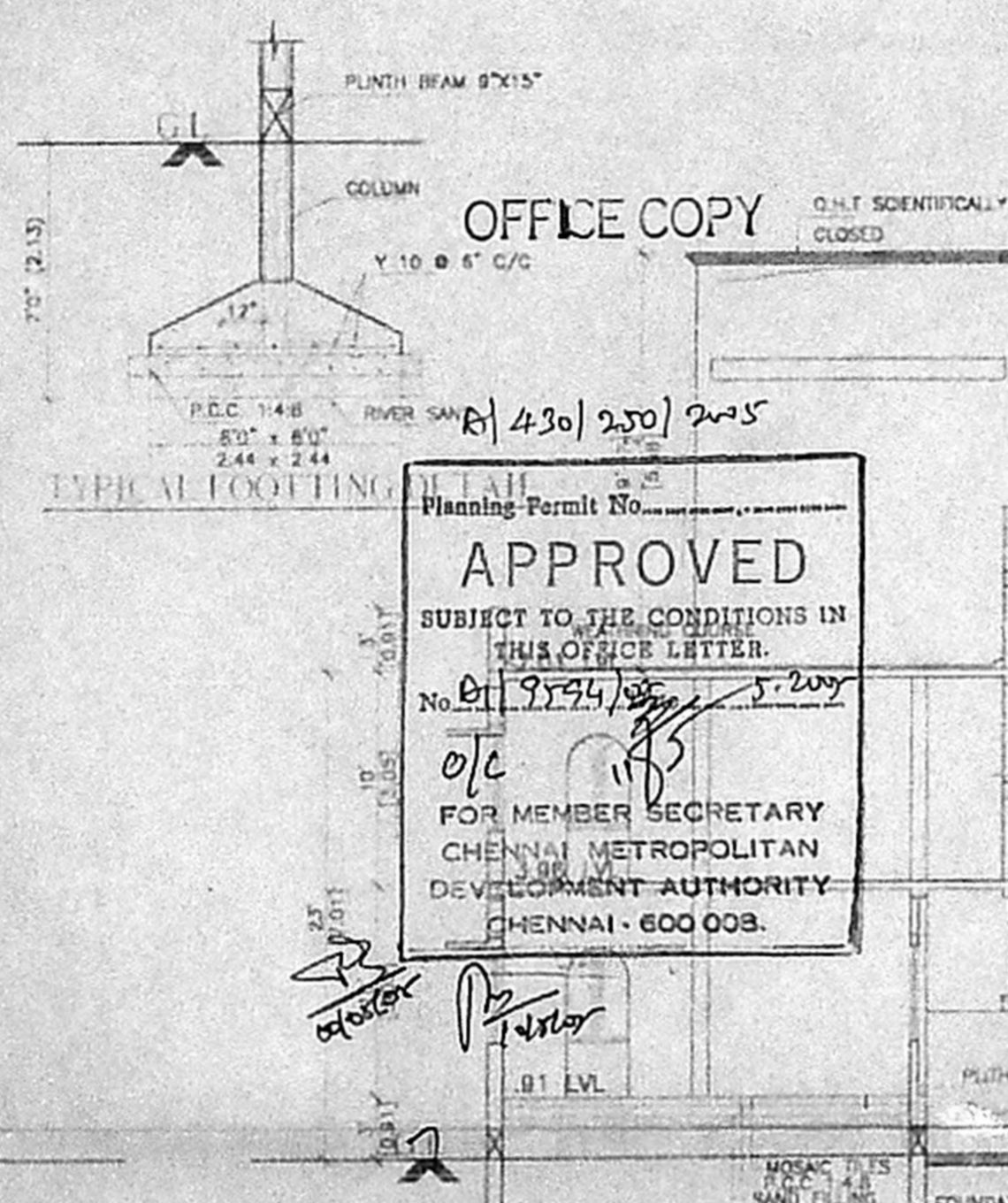
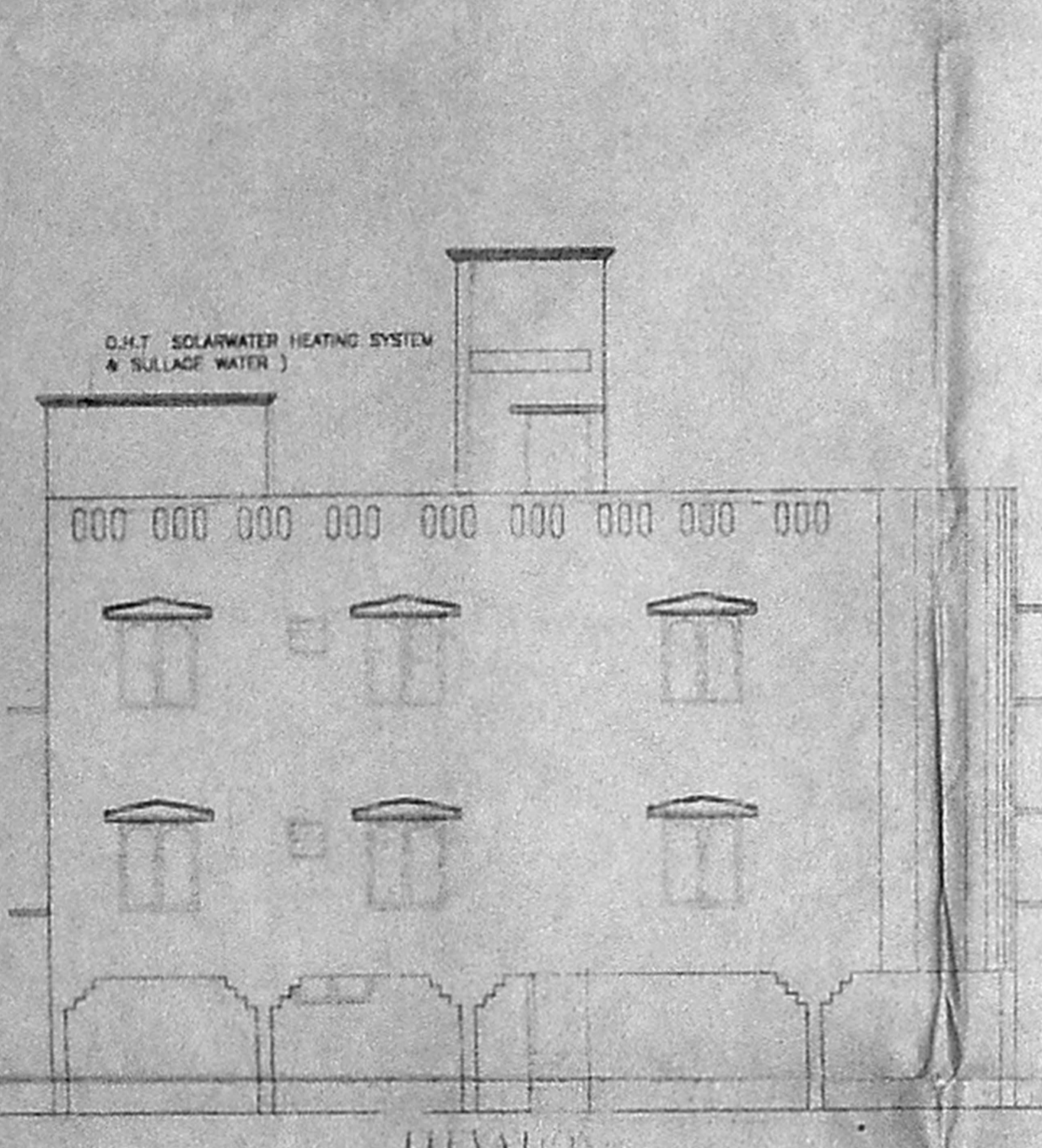
AREA STATEMENT

Plot extent (as per site)	300.00	250.00
Plot extent (as per P&I)	280.00	230.00
Plot extent (as per P&I)	260.00	210.00
GROUND FLOOR	1004.50	100.00
FIRST FLOOR	1004.50	170.00
SECOND FLOOR	1004.50	80.00
TOTAL AREA	3012.50	350.00
PLOT COVERAGE	-54.55%	
F.S.I.	1.22	
STILT FLOOR	216.55	75.00



OWNER: M. Latha

LICENSED SURVEYOR: Er. V. SRINIVASALU, L.C.E. Asst. Executive Engineer (Retd) Consulting Civil Engineer CLASS I LICENSED SURVEYOR CORPORATION OF CHENNAI. REGD NO 32 OLD NO.17, NEW No.6, NEW COLONY MAIN STREET WEST SAIDAPET, CHENNAI-600 046



86x62